

## DEVELOPER KIT

NDI offers an optional Developer Kit containing the software, hardware and guidance you need to design your own tools.

The Developer Kit contains:

- NDI 6D Architect software
- Tool Design Guide
- 25 passive sphere markers
- 12 mounting posts

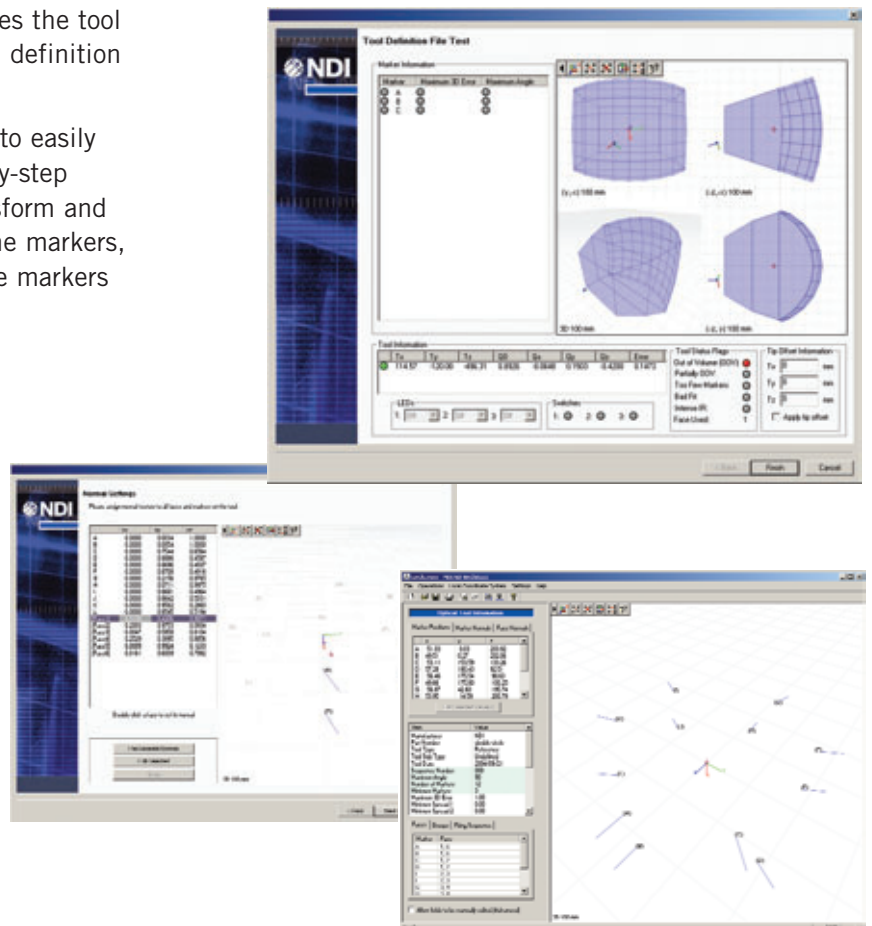
## NDI 6D ARCHITECT

NDI 6D Architect is a software tool that simplifies the tool characterization process and the creation of tool definition files.

The wizard interface of 6D Architect allows you to easily characterize any Polaris System tool with step-by-step instructions. The program makes it easy to transform and manipulate information, including the view of the markers, the orientation of the markers, and renaming the markers within the 6D Architect main window.

### GENERAL FEATURES

- Easy interface in wizard format for successful characterization of tools
- A built-in macro that saves procedural data for duplicate builds
- Graphical representation for more flexible tool viewing and manipulation
- A marker viewer window that displays markers in four panes: views of the xy, yz, and xz planes; and a 3D view



**To run NDI software, you will need:**

**PLATFORM**

- Windows 2000/XP
- Linux 2.6.8 or greater (ToolBox only, optional)

**HARDWARE and MEMORY**

- Pentium Processor (1 GHz recommended)
- 75 MB free disk space
- 256 MB RAM
- Screen resolution 1024 x 768 (1280 x 1024 recommended)